

Arcos Chair

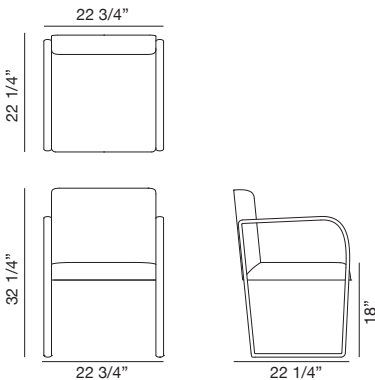
Design by Lievore Altherr, 2017

Art. 6100

Chair with sled base and integrated armrests made of powder-coated aluminum. Shell in metal and plywood is upholstered in fabric, leather, coated fabric or customer's own material. The upholstery can be separated and replaced by technical personnel, since it has been applied without the use of glue. A version with removable cover is available upon request with a surcharge.

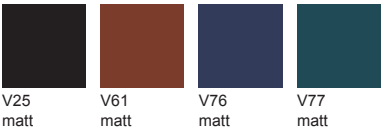


Dimensions *



* File CAD 2D - 3D available for download at www.arper.com

Frame Base



Arcos Chair

Design by Lievore Altherr, 2017


ACCESSORIES

USB Art. 6001

Replacement cover
set Art. 6103

SHIPMENT DETAILS

Art.6100

1 pz = 1  - lb 28,60/ ft³ 12,426

TECHNICAL SPECIFICATIONS

Art.6100

COL requirement s.f. 25.82

COM requirement 1.67 yards.

Width 54",no repeat.

*Classe 1, 2, 1IM: fire retardant
version available with surcharge
and eventual minimum batch

FIRE RETARDANT TEST

ENVIRONMENTAL CERTIFICATIONS





Upholstery



Mono density polyurethan 1



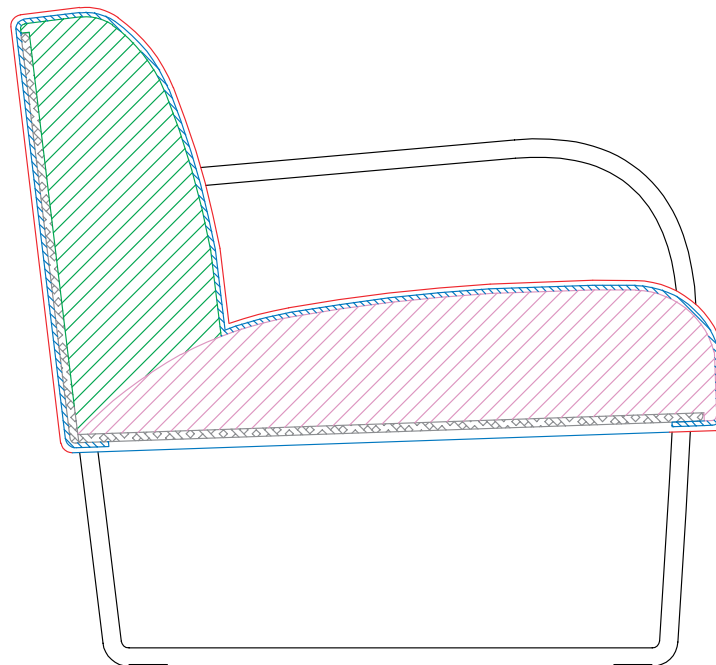
Mono density polyurethan 2



Ovatet and velveteen



Wooden structure



Arcos Chair

Design by Lievore Altherr, 2017

GLIDES

STANDARD



Hard floor



Hard floor

OPTIONAL



Wood



Wood