

SHAAL

Finiture
Materialien
Finitions
Acabados
仕上げ

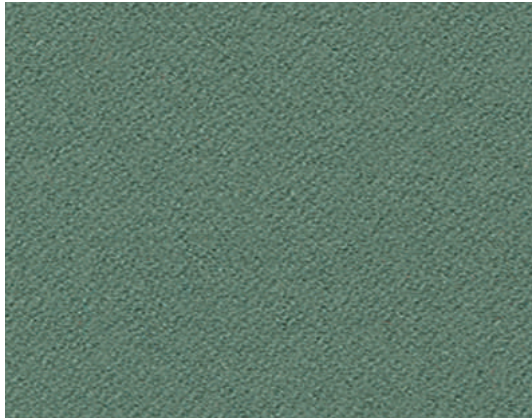
Polipropilene
Polypropylene
Polypropylen
Polypropylène
Polipropileno



P25

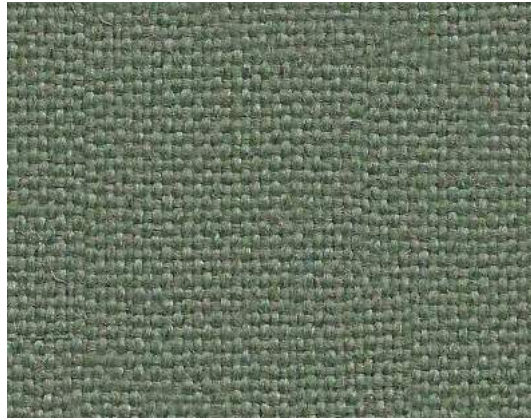
Suggested proposals for bimaternal material/Fixed proposals for bimaternal version

External panel/External Panel

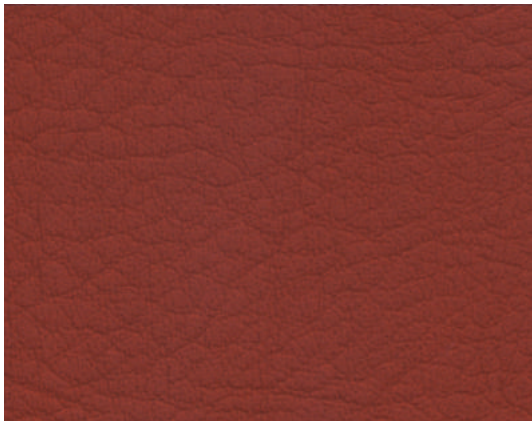


Synergy — Camira

Cushions/Cushions

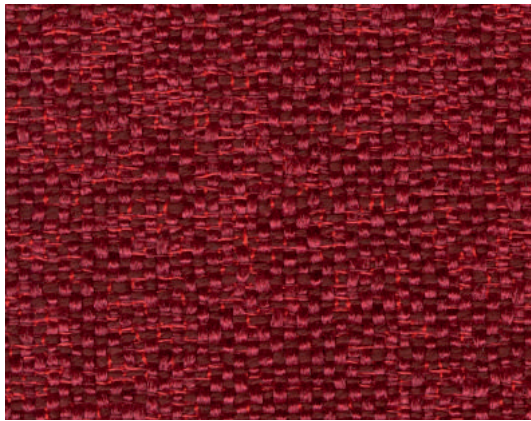


Main Line Flax — Camira



Whisper — Spradling

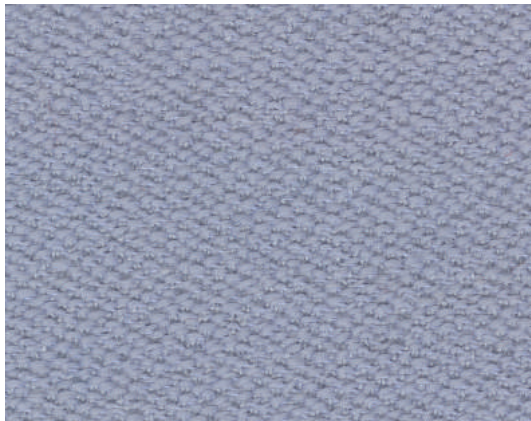
38 colors



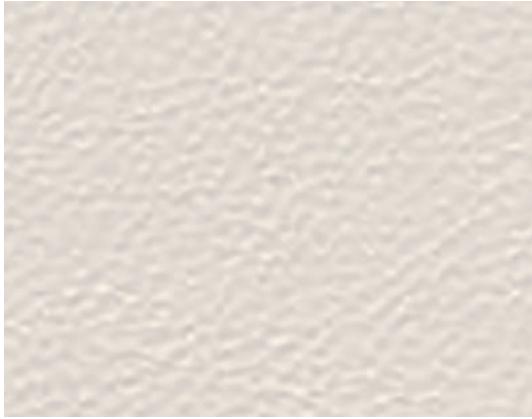
Fabthirty — Rubelli



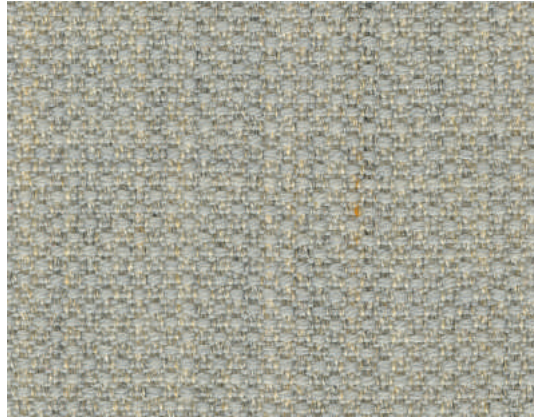
Divina 3 — Kvadrat Raf Simons



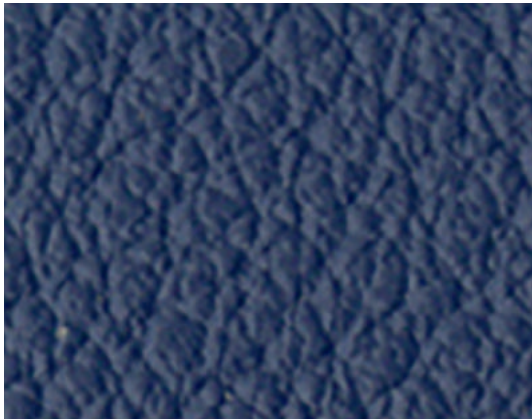
Vidar 4 — Kvadrat Raf Simons



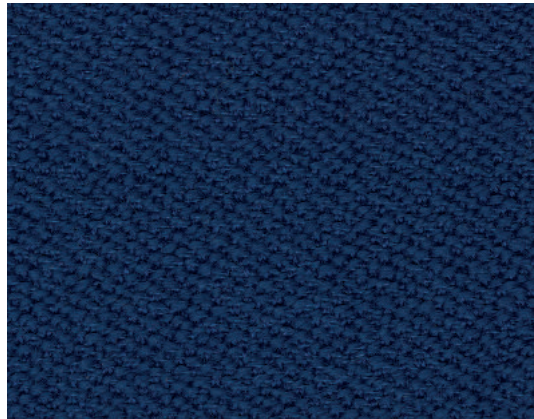
Pelle Fiore — Arper



Fiord 2 — Kvadrat



ElmoSoft — Elmo



Vidar 4 — Kvadrat Raf Simons



CHROME FREE

ELMOSOFT è una pelle semi-anilina, morbida e flessibile. La sua morbidezza associata alla sua robustezza e ad una vasta gamma di colori disponibili rendono la pelle Elmosoft adatta ad un utilizzo nel contract. Punture di insetti e cicatrici visibili contribuiscono a valorizzare le caratteristiche di unicità ed eleganza di questa pelle.

ELMOSOFT is a soft and pliable Semi-Aniline leather. Outstanding comfort combined with excellent durability and an extensive shade card, makes it very suitable for the public environment. Visible insect-bites and scars from healed wounds add to the elegant quality of the leather.

ELMOSOFT. Weiches, geschmeidiges Semi-Anilinleder, Ein sehr strapazierfähiges und im Griff komfortables Leder in reicher Farbauswahl, hervorragend geeignet für Objektausstattungen. Sichtbar erhaltene Insektenstiche und kleine vernarbte Wunden betonen die naturechte Eleganz.

ELMOSOFT est un cuir semi-aniline, souple et doux. Son confort élevé, associé à une grande robustesse et à une vaste gamme de coloris disponibles, le rend particulièrement indiqué pour les collectivités. Les piqûres d'insectes et les cicatrices visibles contribuent à rehausser le caractère élégant du cuir.

ELMOSOFT es una piel semianilina suave y flexible. Su destacable confort combinado con excelente durabilidad y una amplia gama de colores, la hacen muy adecuada para ambientes públicos. Picaduras de insectos visibles y cicatrices de heridas contribuyen a valorar la elegante calidad de la piel.

Arper grade
CHAIRS: ES
SOFAS: ES



ES00100



ES00109



ES00118



ES01003



ES01021



ES01037



ES01043



ES01061



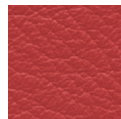
ES01085



ES02092



ES03009



ES05145



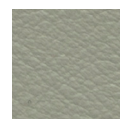
ES07070



ES07071



ES08039



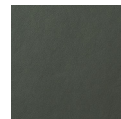
ES08055



ES11033



ES11049



ES11060



ES11062



ES11073



ES13048



ES13070



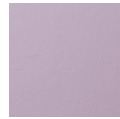
ES13072



ES13075



ES13087



ES16007



ES16018



ES17027



ES22024



ES22030



ES22034



ES33001



ES33004



ES33077



ES35126



ES43054



ES44012



ES44023



ES45035



ES45043



ES45065



ES54021



ES54033



ES54035



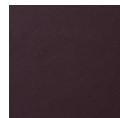
ES55002



ES66006



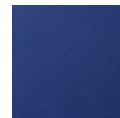
ES71017



ES75013



ES76003



ES77078



ES77127



ES77158



ELMOSOFT è una pelle semi-anilina, morbida e flessibile. La sua morbidezza associata alla sua robustezza e ad una vasta gamma di colori disponibili rendono la pelle Elmosoft adatta ad un utilizzo nel contract. Punture di insetti e cicatrici visibili contribuiscono a valorizzare le caratteristiche di unicità ed eleganza di questa pelle.

ELMOSOFT is a soft and pliable Semi-Aniline leather. Outstanding comfort combined with excellent durability and an extensive shade card, makes it very suitable for the public environment. Visible insect-bites and scars from healed wounds add to the elegant quality of the leather.

ELMOSOFT. Weiches, geschmeidiges Semi-Anilinleder, Ein sehr strapazierfähiges und im Griff komfortables Leder in reicher Farbauswahl, hervorragend geeignet für Objektausstattungen. Sichtbar erhaltene Insektenstiche und kleine vernarbte Wunden betonen die naturechte Eleganz.

ELMOSOFT est un cuir semi-aniline, souple et doux. Son confort élevé, associé à une grande robustesse et à une vaste gamme de coloris disponibles, le rend particulièrement indiqué pour les collectivités. Les piqûres d'insectes et les cicatrices visibles contribuent à rehausser le caractère élégant du cuir.

ELMOSOFT es una piel semianilina suave y flexible. Su destacable confort combinado con excelente durabilidad y una amplia gama de colores, la hacen muy adecuada para ambientes públicos. Picaduras de insectos visibles y cicatrices de heridas contribuyen a valorar la elegante calidad de la piel.

Arper grade
CHAIRS: ES
SOFAS: ES



ES87025



ES87033



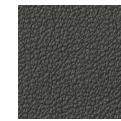
ES88058



ES88059



ES91102



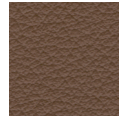
ES91118



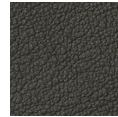
ES93068



ES93099



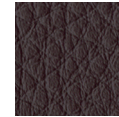
ES93109



ES93121



ES93129



ES95006



ES97038



ES98015



ES98047



ES98087



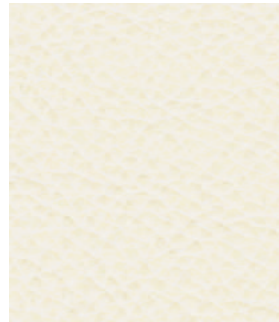
ES98087

Not available for Adell 6811.



NEOCOAST
Soft leather
Weichleder
Cuir souple
Piel

Arper grade
CHAIRS: H
SOFAS: H



P400114



P402061



P412097



P418008



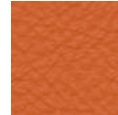
P443041



P443084



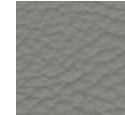
P444015



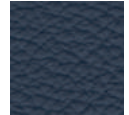
P445024



P455058



P471010



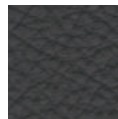
P477022



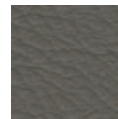
P477035



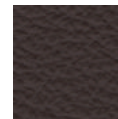
P488017



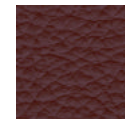
P491097



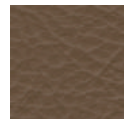
P491100



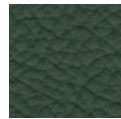
P493090



P495042



P498016



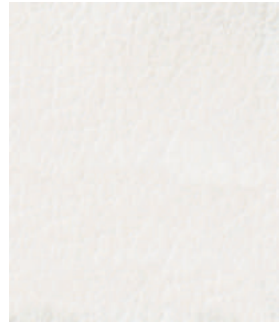
P498043



P499076

Pelle Fiore
Soft leather
Weichleder
Cuir souple
Piel

Arper grade
CHAIRS: I
SOFAS: I



PF00001



PF00003



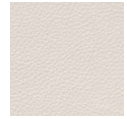
PF00004



PF00007



PF00014



PF00015



PF00016



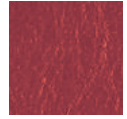
PF00017



PF00018



PF00019



PF00020

Not available for Adell 6811.



SPRADLING®

Valencia

Tessuto spalmato Valencia
Coated fabric Valencia
Beschichtete textilien Valencia
Tissus enduits Valencia
Tejido recubierto Valencia

Arper grade
CHAIRS: **B**
SOFAS: **B**



VL02020



VL00001



VL00002



VL00020



VL00033



VL00034



VL00035



VL01001



VL01048



VL01049



VL01050



VL02001



VL02002



VL02021



VL02062



VL02074



VL02075



VL02106



VL02107



VL02108



VL02109



VL02110



VL02111



VL02112



VL02113



VL02114



VL02115



VL02116



VL02117



VL02118



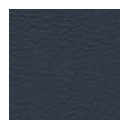
VL02119



VL03001



VL03067



VL03068



VL03069



VL04001



VL04002



VL04003



VL04040



VL04041



VL04042



VL04043



VL04044



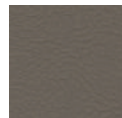
VL04045



VL04052



VL05001



VL05002



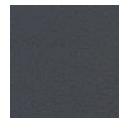
VL05041



VL05056



VL05057



VL05065



VL05069



VL06002





SPRADLING®

Valencia

Tessuto spalmato Valencia
Coated fabric Valencia
Beschichtete textilien Valencia
Tissus enduits Valencia
Tejido recubierto Valencia

Arper grade
CHAIRS: **B**
SOFAS: **B**



VL06003



VL06012



VL06013



VL06019



VL07001



VL08032



VL09001



VL09035



VL09607

Not available for Adell 6811.



Arper grade
CHAIRS: C
SOFAS: B



Not available for Adell 6811 and 6812.

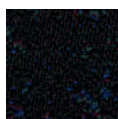
kvadrat

Atom

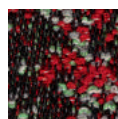
Arper grade **M**
CHAIRS: **M**
SOFAS: **M**
PANELS: **M**



AM00124



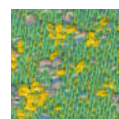
AM00194



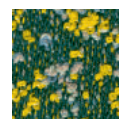
AM00574



AM00774



AM00944



AM00964

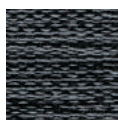
kvadrat

Balder 3

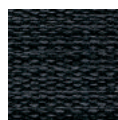
Arper grade **I**
CHAIRS: **I**
SOFAS: **I**
PANELS: **I**



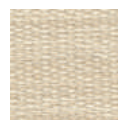
B100132



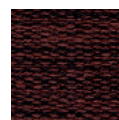
B100152



B100192



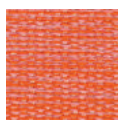
B100212



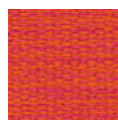
B100382



B100432



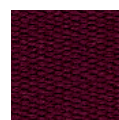
B100542



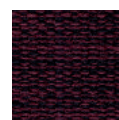
B100562



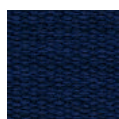
B100612



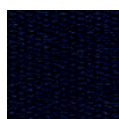
B100682



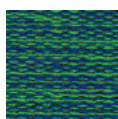
B100692



B100782



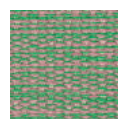
B100792



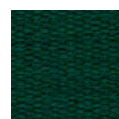
B100862



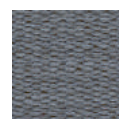
B100912



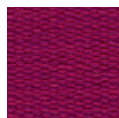
B100942



B100982



B101775



B102635

kvadrat

Canvas 2



Kvadrat's Canvas 2 has been awarded the EU Ecolabel

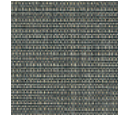
Arper grade
CHAIRS: D
SOFAS: F
PANELS: D



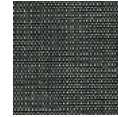
CV00114



CV00124



CV00134



CV00154



CV00174



CV00216



CV00224



CV00244



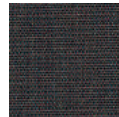
CV00254



CV00264



CV00356



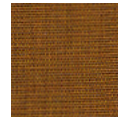
CV00364



CV00374



CV00414



CV00424



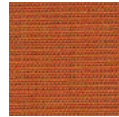
CV00446



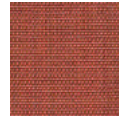
CV00454



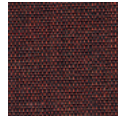
CV00546



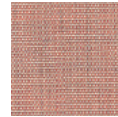
CV00556



CV00566



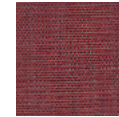
CV00576



CV00614



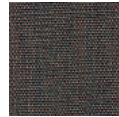
CV00644



CV00654



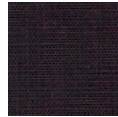
CV00666



CV00674



CV00684



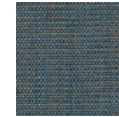
CV00694



CV00716



CV00726



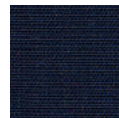
CV00734



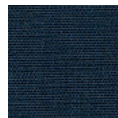
CV00746



CV00764



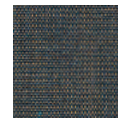
CV00786



CV00794



CV00836



CV00854



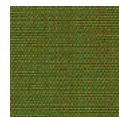
CV00926



CV00936



CV00946



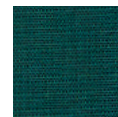
CV00954



CV00964



CV00974



CV00984



CV00996

kvadrat

Divina 3



Kvadrat's Divina 3 has been awarded the EU Ecolabel

Arper grade
CHAIRS: G
SOFAS: I
PANELS: G

	DV00171	DV00106	DV00154	DV00173	DV00181	DV00191	
	DV00224	DV00236	DV00246	DV00334	DV00346		
DV00356	DV00376	DV00384	DV00393	DV00426	DV00444	DV00462	DV00526
DV00536	DV00542	DV00552	DV00562	DV00584	DV00623	DV00626	DV00636
DV00652	DV00662	DV00671	DV00666	DV00676	DV00684	DV00686	DV00691
DV00692	DV00696	DV00712	DV00742	DV00756	DV00782	DV00791	DV00793
DV00826	DV00836	DV00846	DV00856	DV00876	DV00886	DV00893	DV00922
DV00936	DV00944	DV00956	DV00966	DV00984			

kvadrat

Divina MD



Kvadrat's Divina MD has been awarded the EU Ecolabel

Arper grade
CHAIRS: G
SOFAS: I
PANELS: G



DI00193



DI00203



DI00213



DI00293



DI00343



DI00353



DI00363



DI00413



DI00433



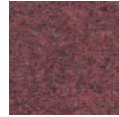
DI00453



DI00613



DI00633



DI00653



DI00673



DI00683



DI00713



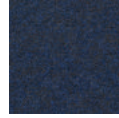
DI00733



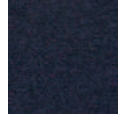
DI00743



DI00753



DI00773



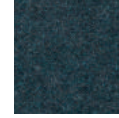
DI00783



DI00813



DI00843



DI00873



DI00913



DI00943



DI00973

arper

kvadrat

Divina Melange 3



Kvadrat's Divina Melange 3 has been awarded the EU Ecolabel

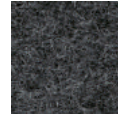
Arper grade
CHAIRS: G
SOFAS: I
PANELS: G



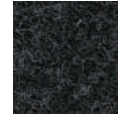
DM00120



DM00147



DM00170



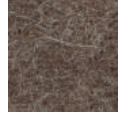
DM00180



DM00227



DM00237



DM00260



DM00277



DM00280



DM00367



DM00427



DM00457



DM00467



DM00471



DM00517



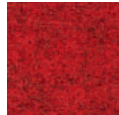
DM00527



DM00547



DM00557



DM00567



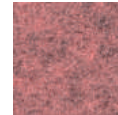
DM00571



DM00581



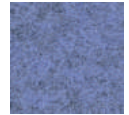
DM00597



DM00617



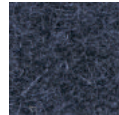
DM00620



DM00647



DM00677



DM00687



DM00731



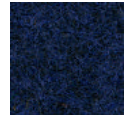
DM00747



DM00757



DM00777



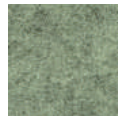
DM00787



DM00821



DM00871



DM00917



DM00937



DM00967



DM00977

kvadrat

Field 2

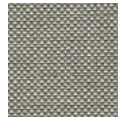


Kvadrat's Field 2
has been awarded
the EU Ecolabel

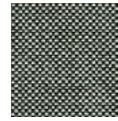
Arper grade
CHAIRS: **B**
SOFAS: **C**
PANELS: **B**



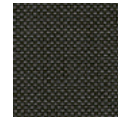
FI00123



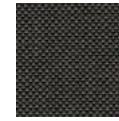
FI00132



FI00142



FI00173



FI00182



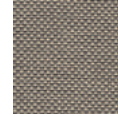
FI00192



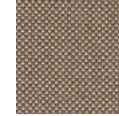
FI00222



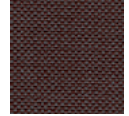
FI00233



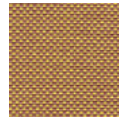
FI00242



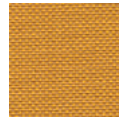
FI00343



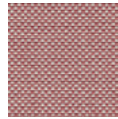
FI00373



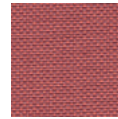
FI00443



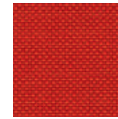
FI00463



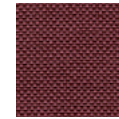
FI00623



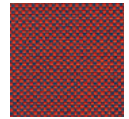
FI00643



FI00662



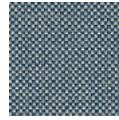
FI00663



FI00673



FI00693



FI00723



FI00733



FI00763



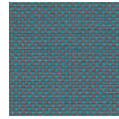
FI00773



FI00782



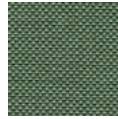
FI00793



FI00843



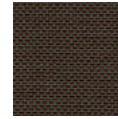
FI00933



FI00943



FI00963



FI00983

arper

kvadrat

Fiord 2 (EU Ecolabel)



Kvadrat's Fiord 2
has been awarded
the EU Ecolabel

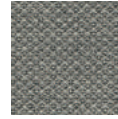
Arper grade
CHAIRS: F
SOFAS: F
PANELS: F



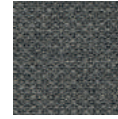
FD00101



FD00121



FD00151



FD00171



FD00191



FD00201



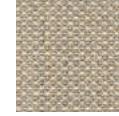
FD00251



FD00262



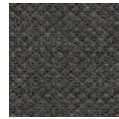
FD00271



FD00322



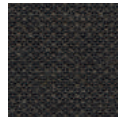
FD00351



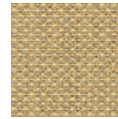
FD00371



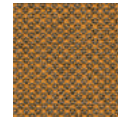
FD00382



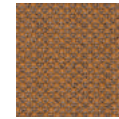
FD00391



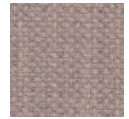
FD00422



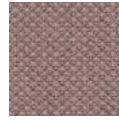
FD00442



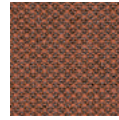
FD00451



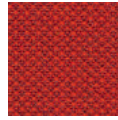
FD00521



FD00551



FD00562



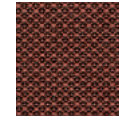
FD00571



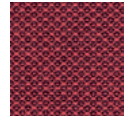
FD00581



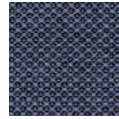
FD00591



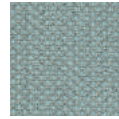
FD00642



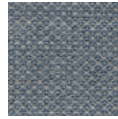
FD00662



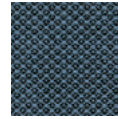
FD00672



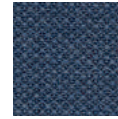
FD00721



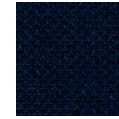
FD00751



FD00762



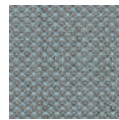
FD00771



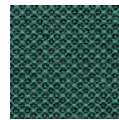
FD00782



FD00791



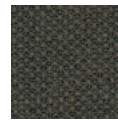
FD00821



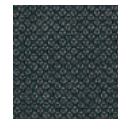
FD00862



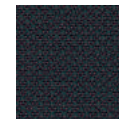
FD00951



FD00961



FD00971



FD00981



FD00991

arper

kvadrat

Floyd

Arper grade
CHAIRS: C
SOFAS: C
PANELS: C



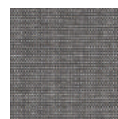
F100103



F100123



F100143



F100163



F100193



F100213



F100223



F100243



F100263



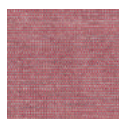
F100363



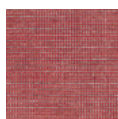
F100413



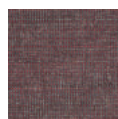
F100623



F100643



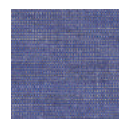
F100663



F100693



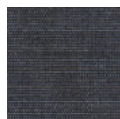
F100723



F100763



F100783



F100793



F100923



F100943



F100963



F100983

kvadrat

Hallingdal 65 (EU Ecolabel)



Kvadrat's Hallingdal 65 has been awarded the EU Ecolabel

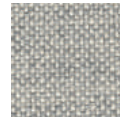
Arper grade
CHAIRS: G
SOFAS: G
PANELS: G(*)



HA00103



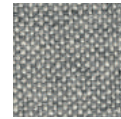
HA00100



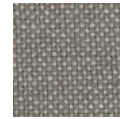
HA00110



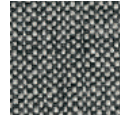
HA00113



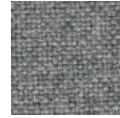
HA00116



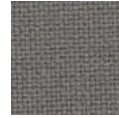
HA00123



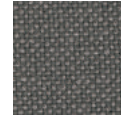
HA00126



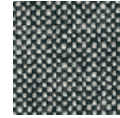
HA00130



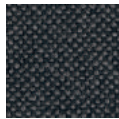
HA00143



HA00153



HA00166



HA00173



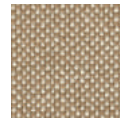
HA00180



HA00190



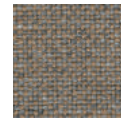
HA00200



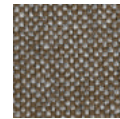
HA00220



HA00224



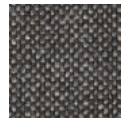
HA00227



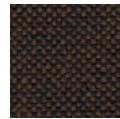
HA00270



HA00350



HA00368



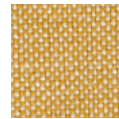
HA00370



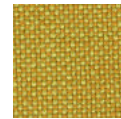
HA00376



HA00390



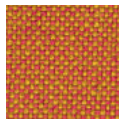
HA00407



HA00420



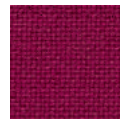
HA00457



HA00526



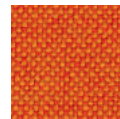
HA00547



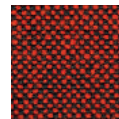
HA00563



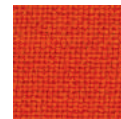
HA00573



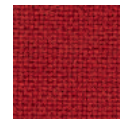
HA00590



HA00596



HA00600



HA00657



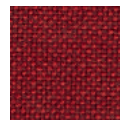
HA00660



HA00674



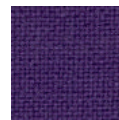
HA00680



HA00687



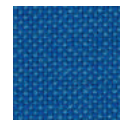
HA00694



HA00702



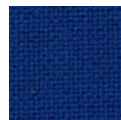
HA00723



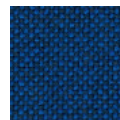
HA00733



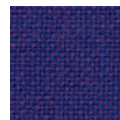
HA00750



HA00753



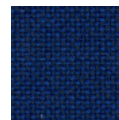
HA00754



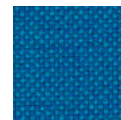
HA00763



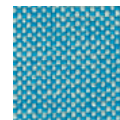
HA00764



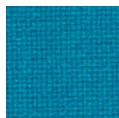
HA00773



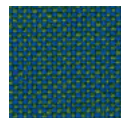
HA00810



HA00840



HA00850



HA00890



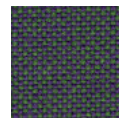
HA00907



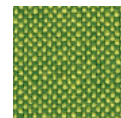
HA00944



HA00960



HA00968



HA00980

Not available for Paravan collection

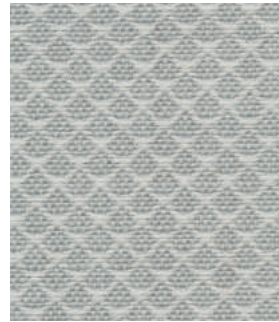
kvadrat

Jaali

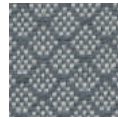


Kvadrat's Jaali has been awarded the EU Ecolabel

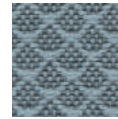
Arper grade
CHAIRS: G
SOFAS: G
PANELS: G



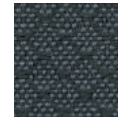
JA00101



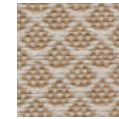
JA00121



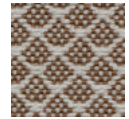
JA00141



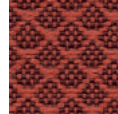
JA00171



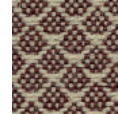
JA00201



JA00341



JA00561



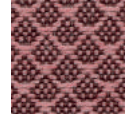
JA00571



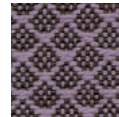
JA00591



JA00611



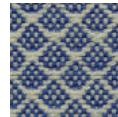
JA00651



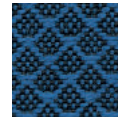
JA00671



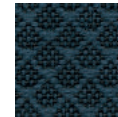
JA00751



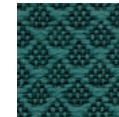
JA00761



JA00781



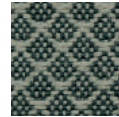
JA00791



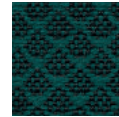
JA00871



JA00951



JA00961



JA00991

kvadrat

Moss

Arper grade
CHAIRS: H
SOFAS: H
PANELS: H



M800001



M800002



M800003



M800004



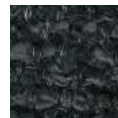
M800005



M800006



M800007



M800008



M800009



M800010



M800011



M800012



M800013



M800014



M800015



M800016



M800017



M800018



M800019



M800020



M800021

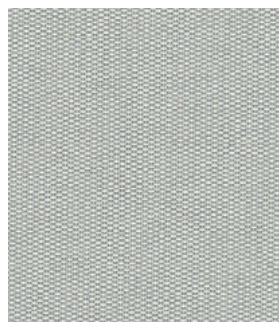


M800022

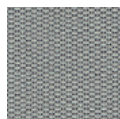
kvadrat

Patio

Arper grade
CHAIRS: D
SOFAS: D



PT00110



PT00140



PT00150



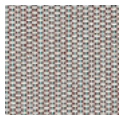
PT00170 (*)



PT00200



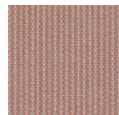
PT00210



PT00220



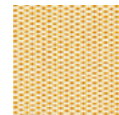
PT00230



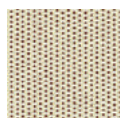
PT00340



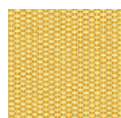
PT00370 (*)



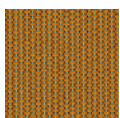
PT00410



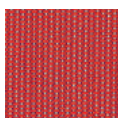
PT00430



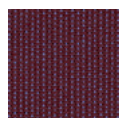
PT00440



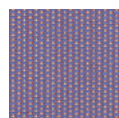
PT00450



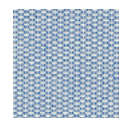
PT00550



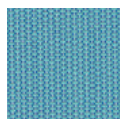
PT00570



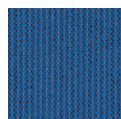
PT00650



PT00730



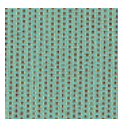
PT00740



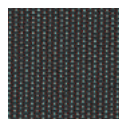
PT00750



PT00780



PT00840



PT00970

(*) Not available for Pix Outdoor collection.

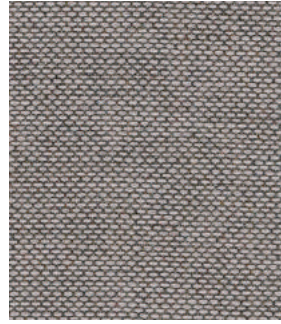
kvadrat

Re-wool

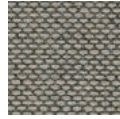


Kvadrat's Re-wool has been awarded the EU Ecolabel

Arper grade
CHAIRS: E
SOFAS: E
PANELS: E



RW00108



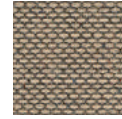
RW00128



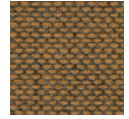
RW00158



RW00198



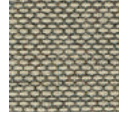
RW00218



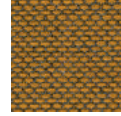
RW00358



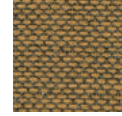
RW00378



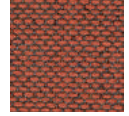
RW00408



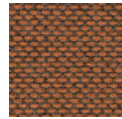
RW00448



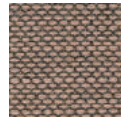
RW00458



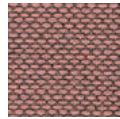
RW00558



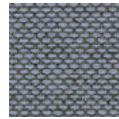
RW00568



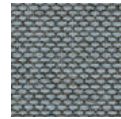
RW00628



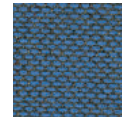
RW00648



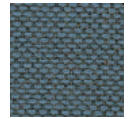
RW00658



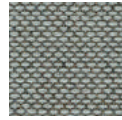
RW00718



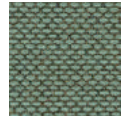
RW00758



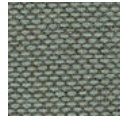
RW00768



RW00828



RW00858



RW00868

kvadrat

Remix 3 (EU Ecolabel)



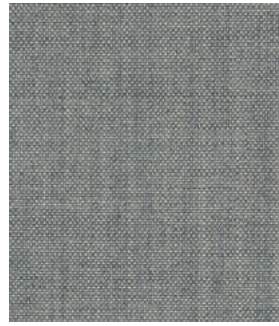
Kvadrat's Remix 3
has been awarded
the EU Ecolabel

Arper grade

CHAIRS: C

SOFAS: D

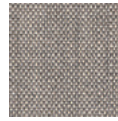
PANELS: C



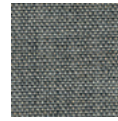
RX00123



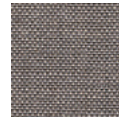
RX00113 (*)



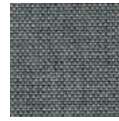
RX00126



RX00133



RX00136



RX00143



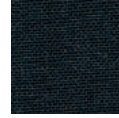
RX00152



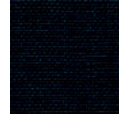
RX00163



RX00173



RX00183



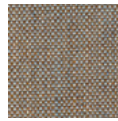
RX00196



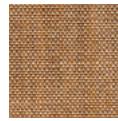
RX00223 (*)



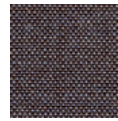
RX00233



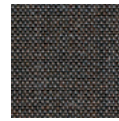
RX00242



RX00252



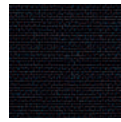
RX00266



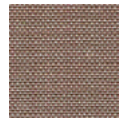
RX00276



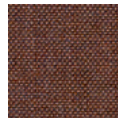
RX00286



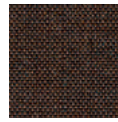
RX00296



RX00326



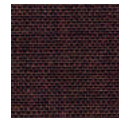
RX00346



RX00356



RX00362



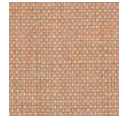
RX00373



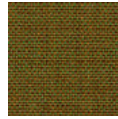
RX00383



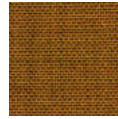
RX00393



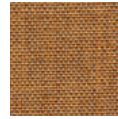
RX00406



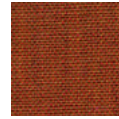
RX00412



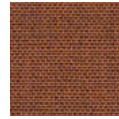
RX00422



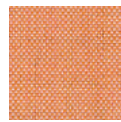
RX00433



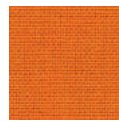
RX00443



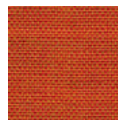
RX00452



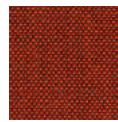
RX00516



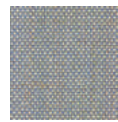
RX00536



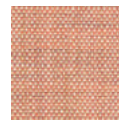
RX00543



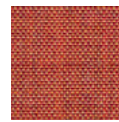
RX00566



RX00606



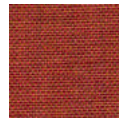
RX00612



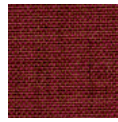
RX00632



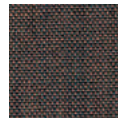
RX00643



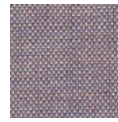
RX00653



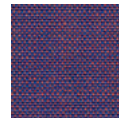
RX00662



RX00672



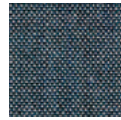
RX00682



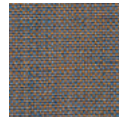
RX00686



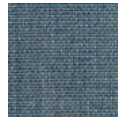
RX00692



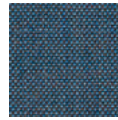
RX00716



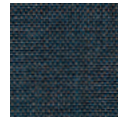
RX00722



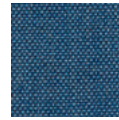
RX00733



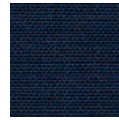
RX00743



RX00753



RX00762



RX00773



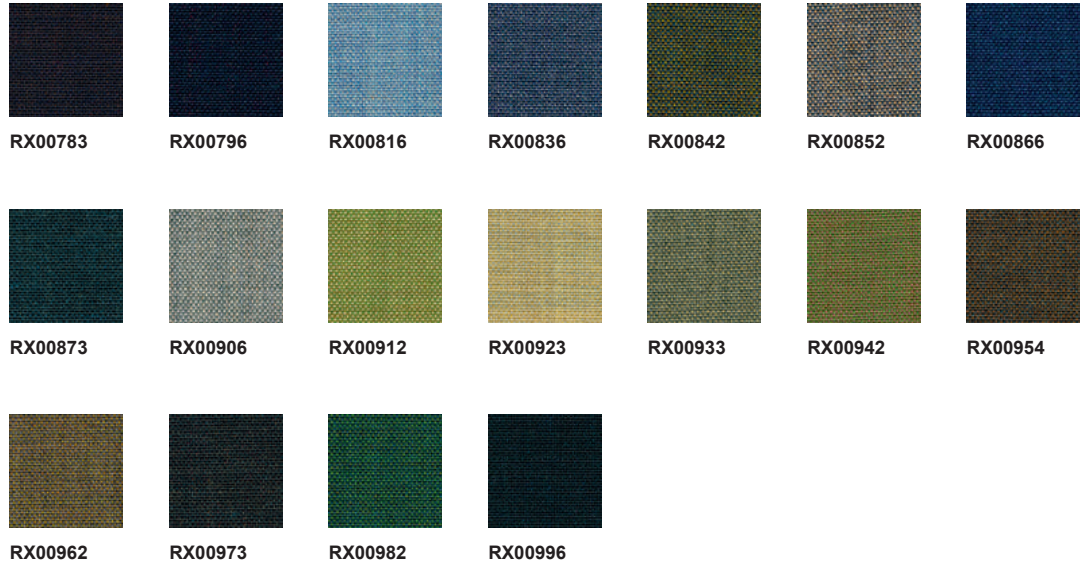
kvadrat

Remix 3 (EU Ecolabel)



Kvadrat's Remix 3 has been awarded the EU Ecolabel

Arper grade
CHAIRS: C
SOFAS: D
PANELS: C



(*) RX00113 - RX00223: only for the cushions Owl, Lines, Pleats e Gego.

kvadrat

Revive 1

Arper grade
CHAIRS: B
SOFAS: B
PANELS: B



kvadrat

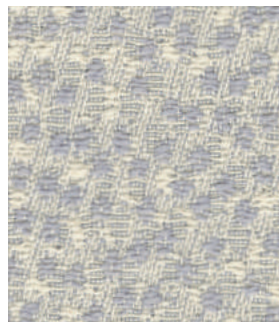
Ria

Arper grade

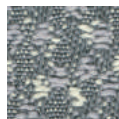
CHAIRS: ES

SOFAS: ES

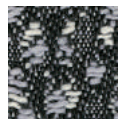
PANELS: ES



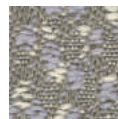
RA00111



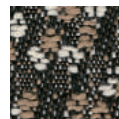
RA00141



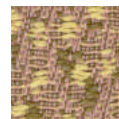
RA00181



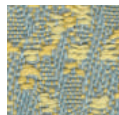
RA00241



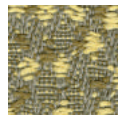
RA00281



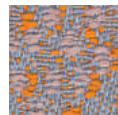
RA00431



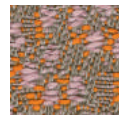
RA00441



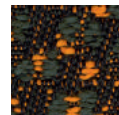
RA00451



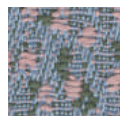
RA00541



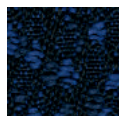
RA00551



RA00591



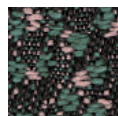
RA00741



RA00791



RA00921



RA00981

kvadrat

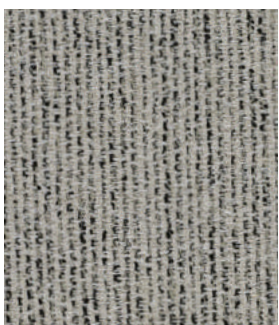
Savanna

Arper grade

CHAIRS: G

SOFAS: G

PANELS: G



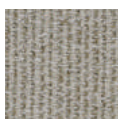
SA00122



SA00152



SA00192



SA00202



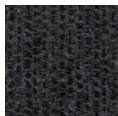
SA00222



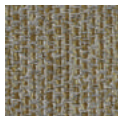
SA00242



SA00262



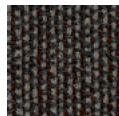
SA00292



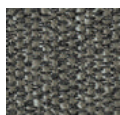
SA00442



SA00622



SA00672



SA00952

kvadrat

Sonar 3

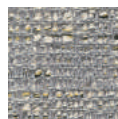
Arper grade
CHAIRS: ES
SOFAS: ES
PANELS: ES



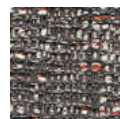
S700113



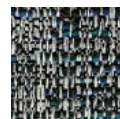
S700124



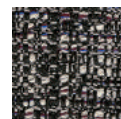
S700134



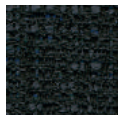
S700153



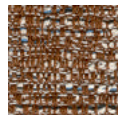
S700164



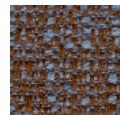
S700173



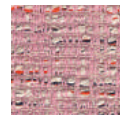
S700194



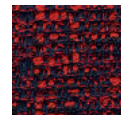
S700374



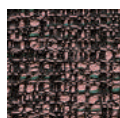
S700384



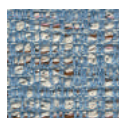
S700633



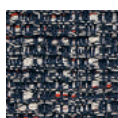
S700673



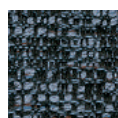
S700684



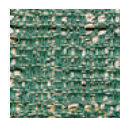
S700734



S700773



S700784



S700934



S700974

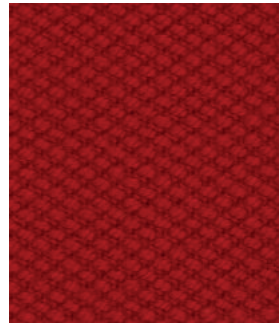
kvadrat

Steelcut 3



Kvadrat's Steelcut 3
has been awarded the
EU Ecolabel

Arper grade
CHAIRS: G
SOFAS: H
PANELS: G



SE00545



SE00110



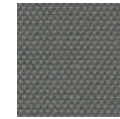
SE00120



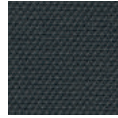
SE00140



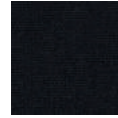
SE00155



SE00160



SE00180



SE00190



SE00220



SE00240



SE00252



SE00265



SE00365



SE00402



SE00445



SE00452



SE00502



SE00512



SE00522



SE00535



SE00552



SE00562



SE00605



SE00612



SE00655



SE00662



SE00672



SE00682



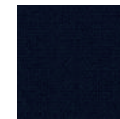
SE00695



SE00732



SE00742



SE00775



SE00780



SE00912



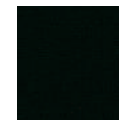
SE00922



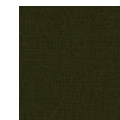
SE00932



SE00962



SE00975



SE00985

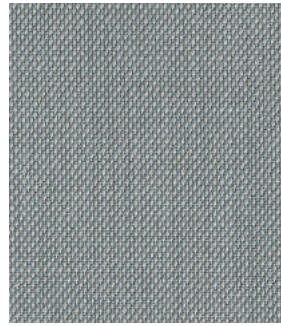
arper

kvadrat
Steelcut Trio 3

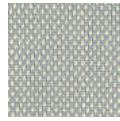


Kvadrat's Steelcut Trio 3 has been awarded the EU Ecolabel

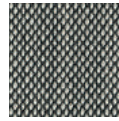
Arper grade
CHAIRS: G
SOFAS: H
PANELS: G



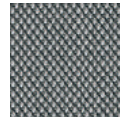
ST00113



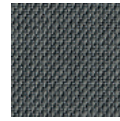
ST00105



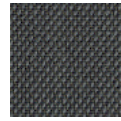
ST00124



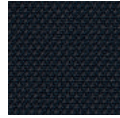
ST00133



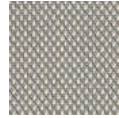
ST00153



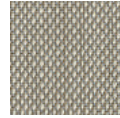
ST00176



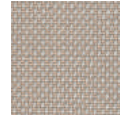
ST00195



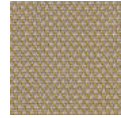
ST00205



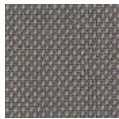
ST00213



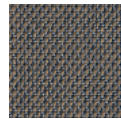
ST00226



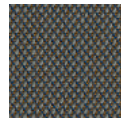
ST00236



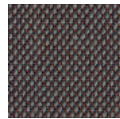
ST00246



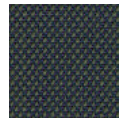
ST00253



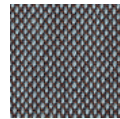
ST00266



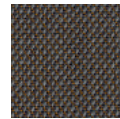
ST00276



ST00283



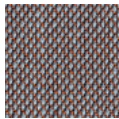
ST00336



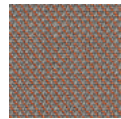
ST00376



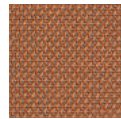
ST00383



ST00416



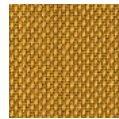
ST00426



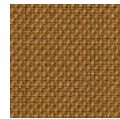
ST00436



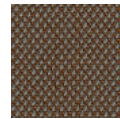
ST00446



ST00453



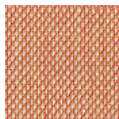
ST00466



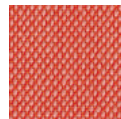
ST00476



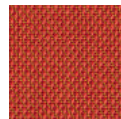
ST00506



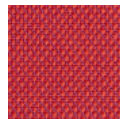
ST00515



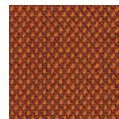
ST00526



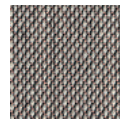
ST00533



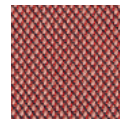
ST00553



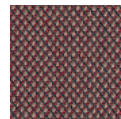
ST00576



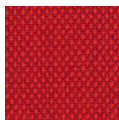
ST00616



ST00636



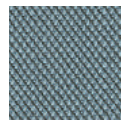
ST00645



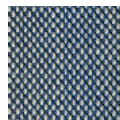
ST00666



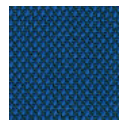
ST00686



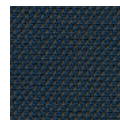
ST00713



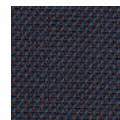
ST00716



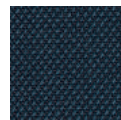
ST00746



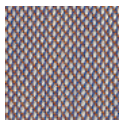
ST00756



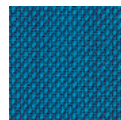
ST00776



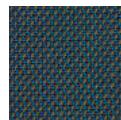
ST00796



ST00806



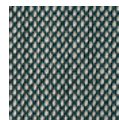
ST00865



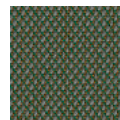
ST00883



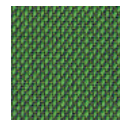
ST00906



ST00916



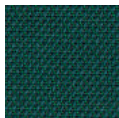
ST00946



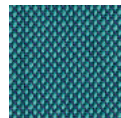
ST00953



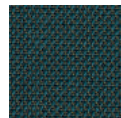
ST00966



ST00976



ST00983



ST00996

kvadrat

Tonus 4



Kvadrat's Tonus 4
has been awarded the
EU Ecolabel

Arper grade
CHAIRS: F
SOFAS: G
PANELS: F



T300100



T300118



T300125



T300128



T300129



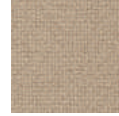
T300130



T300131



T300132



T300135



T300207



T300210



T300216



T300224



T300240



T300244



T300364



T300374



T300394



T300424



T300440



T300454



T300464



T300474



T300508



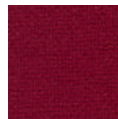
T300554



T300605



T300608



T300609



T300610



T300613



T300615



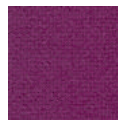
T300619



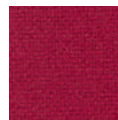
T300631



T300634



T300636



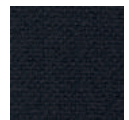
T300654



T300664



T300684



T300690



T300754



T300764



T300854



T300914



T300934



T300954



T300964



T300974

Kvadrat

Vidar 4

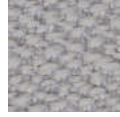


Kvadrat's Vidar 4 has been awarded the EU Ecolabel

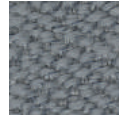
Arper grade J
CHAIRS: J
SOFAS: J
PANELS: J



VD00106



VD00123



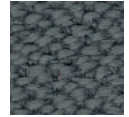
VD00133



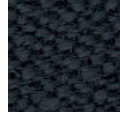
VD00143



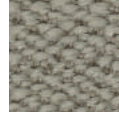
VD00146



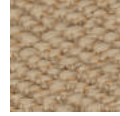
VD00152



VD00182



VD00222



VD00323



VD00333



VD00353



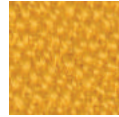
VD00363



VD00386



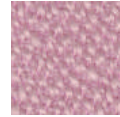
VD00443



VD00456



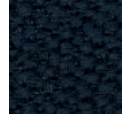
VD00472



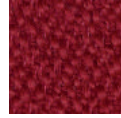
VD00526



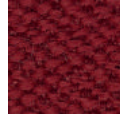
VD00542



VD00554



VD00556



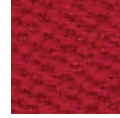
VD00582



VD00622



VD00633



VD00653



VD00656



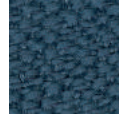
VD00676



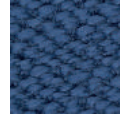
VD00693



VD00723



VD00733



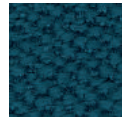
VD00743



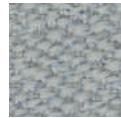
VD00772



VD00786



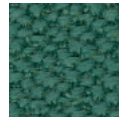
VD00872



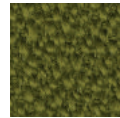
VD00913



VD00932



VD00943



VD00956



VD00972



VD01062



VD01511



VD01880



Jet

Arper grade
CHAIRS: A
SOFAS: A
PANELS: A

JE00001 (*)	JE01001	JE01006	JE02010	JE02012	JE02024	
JE04017	JE04018	JE04027	JE04028	JE04051	JE06007	JE06013
JE06014	JE06056	JE06091	JE06095	JE06098	JE07014	JE07025
JE07034	JE07041	JE08001	JE08009	JE08017	JE08033	JE08078
JE09108	JE09109	JE09110	JE09219	JE09281	JE09294	JE09301
JE09302	JE09304	JE09305	JE09401	JE09402	JE09403	JE09404
JE09501	JE09600	JE09601	JE09602	JE09603	JE09604	JE09605

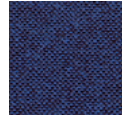
(*) Not available for Cila and Cila Go collections



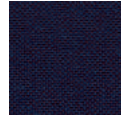


Jet

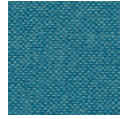
Arper grade
CHAIRS: A
SOFAS: A
PANELS: A



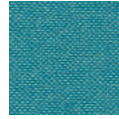
JE09606



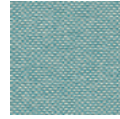
JE09607



JE09608



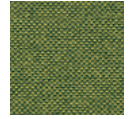
JE09609



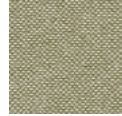
JE09610



JE09701



JE09702



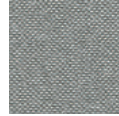
JE09703



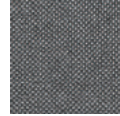
JE09704



JE09803



JE09804



JE09805



JE09806

(*) Not available for Cila and Cila Go collections

camira
Main Line Flax

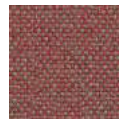
Arper grade
CHAIRS: C
SOFAS: C
PANELS: C



MFMLF01



MFMLF02



MFMLF03



MFMLF05



MFMLF06



MFMLF07



MFMLF08



MFMLF09



MFMLF10



MFMLF12



MFMLF13



MFMLF14



MFMLF15



MFMLF16



MFMLF17



MFMLF18



MFMLF19



MFMLF20



MFMLF21



MFMLF22



MFMLF23



MFMLF24



MFMLF25



MFMLF26



MFMLF28



MFMLF29



MFMLF31



MFMLF32



MFMLF34



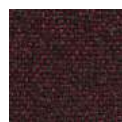
MFMLF35



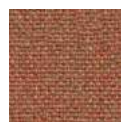
MFMLF36



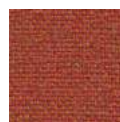
MFMLF37



MFMLF40



MFMLF43



MFMLF44



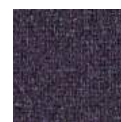
MFMLF45



MFMLF46



MFMLF47



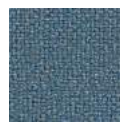
MFMLF48



MFMLF49



MFMLF50



MFMLF51



MFMLF52



MFMLF53



MFMLF54



MFMLF55



MFMLF56



MFMLF57



MFMLF59



MFMLF60



MFMLF61



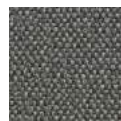
MFMLF62



MFMLF63



MFMLF64



MFMLF65



MFMLF66



MFMLF67

camira
Phoenix

Arper grade
CHAIRS: A
SOFAS: A
PANELS: A



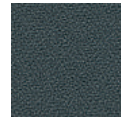
PHYP005



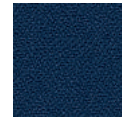
PHYP009



PHYP011



PHYP019



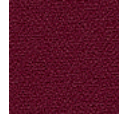
PHYP026



PHYP045



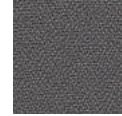
PHYP046



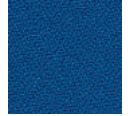
PHYP051



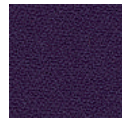
PHYP076



PHYP081



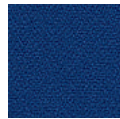
PHYP082



PHYP084



PHYP097



PHYP100



PHYP105



PHYP106



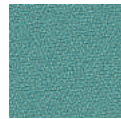
PHYP107



PHYP108



PHYP110



PHYP112



PHYP113

camira
Synergy

Arper grade
CHAIRS: C
SOFAS: C
PANELS: C



SNLDS05



SNLDS07



SNLDS08



SNLDS16



SNLDS17



SNLDS18



SNLDS19



SNLDS20



SNLDS21



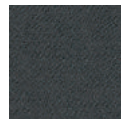
SNLDS22



SNLDS23



SNLDS24



SNLDS25



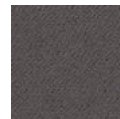
SNLDS26



SNLDS27



SNLDS28



SNLDS29



SNLDS31



SNLDS32



SNLDS33



SNLDS34



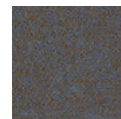
SNLDS35



SNLDS36



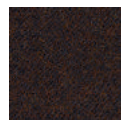
SNLDS37



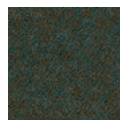
SNLDS38



SNLDS39



SNLDS40



SNLDS41



SNLDS42



SNLDS43



SNLDS44



SNLDS45



SNLDS46



SNLDS47



SNLDS48



SNLDS49



SNLDS50



SNLDS51



SNLDS52



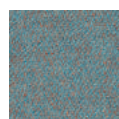
SNLDS53



SNLDS54



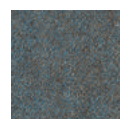
SNLDS55



SNLDS56



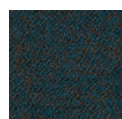
SNLDS57



SNLDS58



SNLDS59



SNLDS60



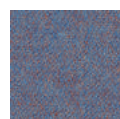
SNLDS61



SNLDS62



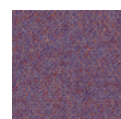
SNLDS63



SNLDS64



SNLDS65



SNLDS66



camira
Synergy

Arper grade
CHAIRS: C
SOFAS: C
PANELS: C



camira
Urban

Arper grade
CHAIRS: B
SOFAS: B
PANELS: B



Gabriel®

Grain

Arper grade
 CHAIRS: C
 SOFAS: C
 PANELS: C



GI60300



GI60301



GI60302



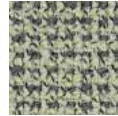
GI60303



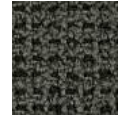
GI60320



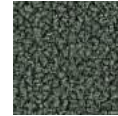
GI60321



GI60322



GI60323



GI60324



GI60325



GI60328



GI60999



GI61037



GI61146



GI61229



GI61230



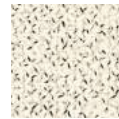
GI61247



GI61248



GI61249



GI61250



GI61251



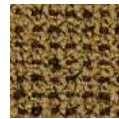
GI61252



GI61253



GI61254



GI61255



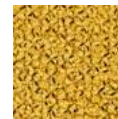
GI61256



GI62016



GI62121



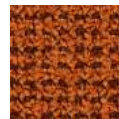
GI62122



GI62123



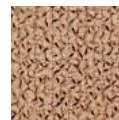
GI63117



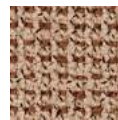
GI63118



GI64041



GI64249



GI64250



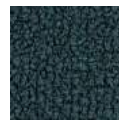
GI64251



GI66216



GI66231



GI66232



GI66233



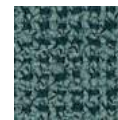
GI66234



GI66235



GI66236



GI66237



GI68155



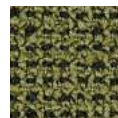
GI68243



GI68257



GI68258



GI68259

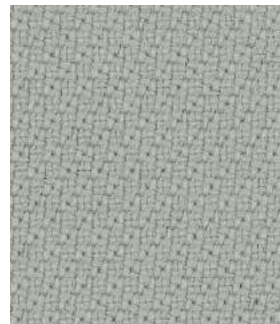


GI68260

Gabriel[®]

Step

Arper grade
 CHAIRS: **B**
 SOFAS: **B**
 PANELS: **B**



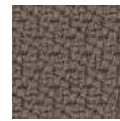
S160004



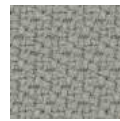
S160011



S160021



S160090



S160091



S160092



S160745



S160746



S160999



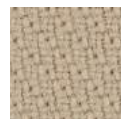
S161103



S161149



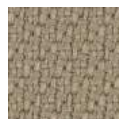
S161787



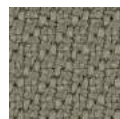
S161788



S161789



S161791



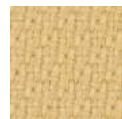
S161793



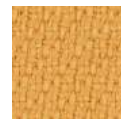
S162057



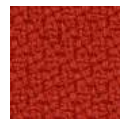
S162073



S162744



S162746



S163012



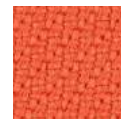
S163075



S163082



S163736



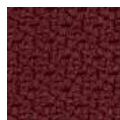
S163738



S163739



S164013



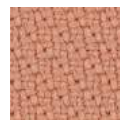
S164159



S164178



S164179



S164767



S164770



S165011



S165018



S165023



S165047



S166018



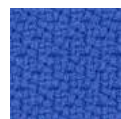
S166019



S166148



S166149



S166150



S166151



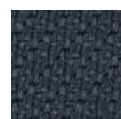
S166152



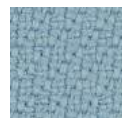
S166763



S166764



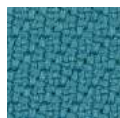
S166765



S167004



S167007



S167072



S167073



S167735



S168118



S168119

Gabriel®

Step

Arper grade
CHAIRS: **B**
SOFAS: **B**
PANELS: **B**



S168120



S168121



S168158



S168159



S168161



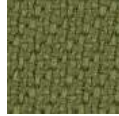
S168162



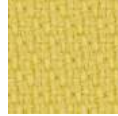
S168163



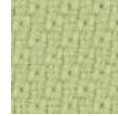
S168165



S168700



S168701



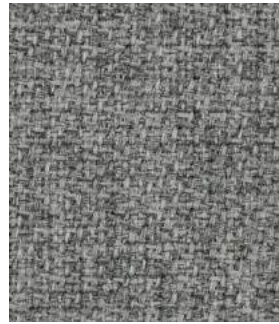
S168798



S168799

Gabriel
Step Melange

Arper grade
CHAIRS: **B**
SOFAS: **B**
PANELS: **B**



SM60004



SM60011



SM60021



SM60090



SM60092



SM60345



SM60345



SM61103



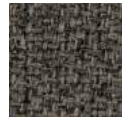
SM61104



SM61149



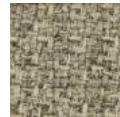
SM61151



SM61152



SM61286



SM61287



SM61288



SM61289



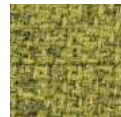
SM61291



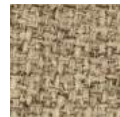
SM61293



SM62057



SM62073



SM62143



SM62144



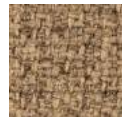
SM62146



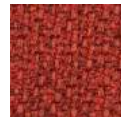
SM63075



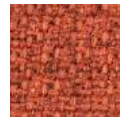
SM63082



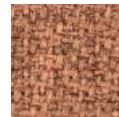
SM63136



SM63137



SM63138



SM63139



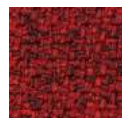
SM64013



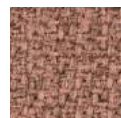
SM64159



SM64178



SM64179



SM64267



SM64270



SM65011



SM65018



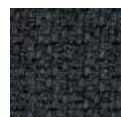
SM65023



SM65047



SM66018



SM66019



SM66148



SM66150



SM66151



SM66152



SM66263



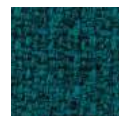
SM66264



SM66265



SM67004



SM67007



SM67072



SM67135



SM68118

Gabriel®

Step Melange

Arper grade
CHAIRS: **B**
SOFAS: **B**
PANELS: **B**



SM68119



SM68120



SM68120



SM68158



SM68159



SM68161



SM68162



SM68163



SM68165



SM68298



SM68299



SM68300

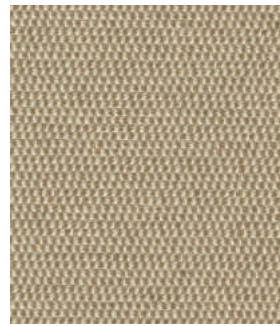


SM68301

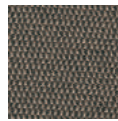
maharam

Messenger

Arper grade
CHAIRS: D
SOFAS: D
PANELS: D



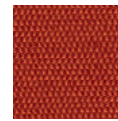
MS00001



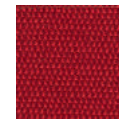
MS00007



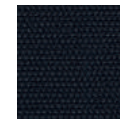
MS00008



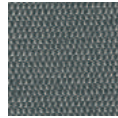
MS00024



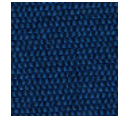
MS00025



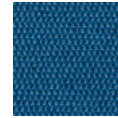
MS00029



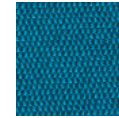
MS00031



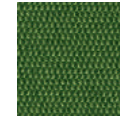
MS00038



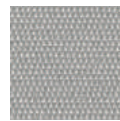
MS00040



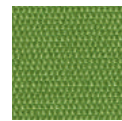
MS00041



MS00045



MS00046



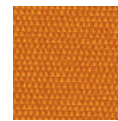
MS00048



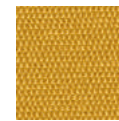
MS00050



MS00051



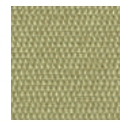
MS00053



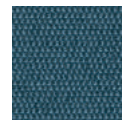
MS00054



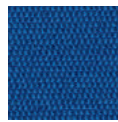
MS00058



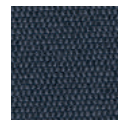
MS00060



MS00061



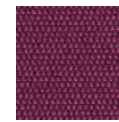
MS00062



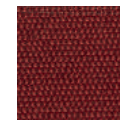
MS00063



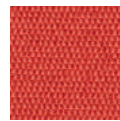
MS00066



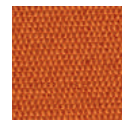
MS00067



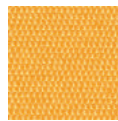
MS00069



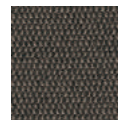
MS00070



MS00071



MS00072



MS00076



MS00077



MS00078



MS00079



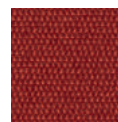
MS00080



MS00081



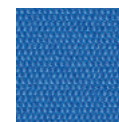
MS00082



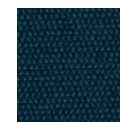
MS00083



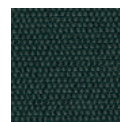
MS00084



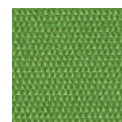
MS00085



MS00086



MS00087



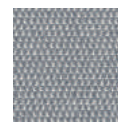
MS00088



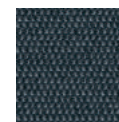
MS00089



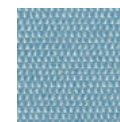
MS00090



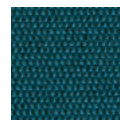
MS00091



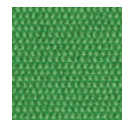
MS00092



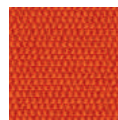
MS00093



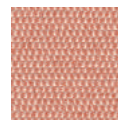
MS00094



MS00095



MS00096



MS00097

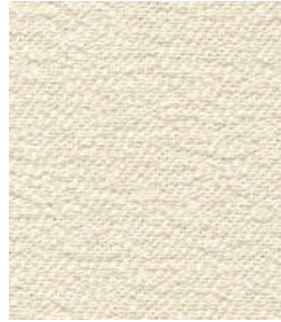


MS00098

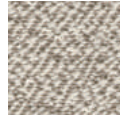


Sera

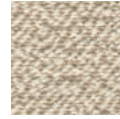
Arper grade
CHAIRS: G
SOFAS: G
PANELS: G



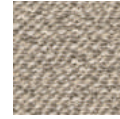
S800001



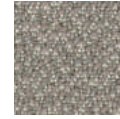
S800002



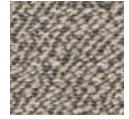
S800003



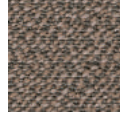
S800004



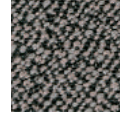
S800005



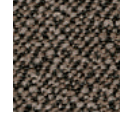
S800006



S800007



S800008



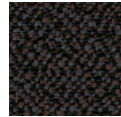
S800009



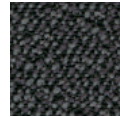
S800010



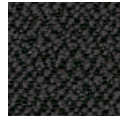
S800011



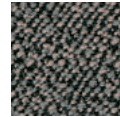
S800012



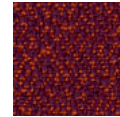
S800013



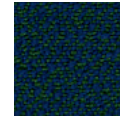
S800014



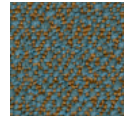
S800015



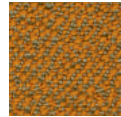
S800016



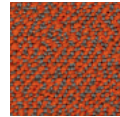
S800017



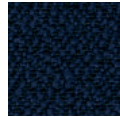
S800018



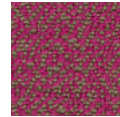
S800019



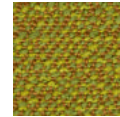
S800020



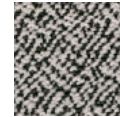
S800021



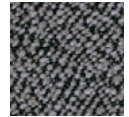
S800022



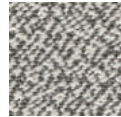
S800023



S800027



S800028



S800029

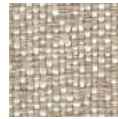


RUBELLI
Fabthirty

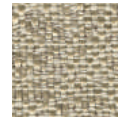
Arper grade
CHAIRS: **G**
SOFAS: **G**
PANELS: **G**



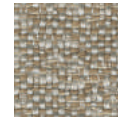
FB00001



FB00002



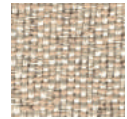
FB00003



FB00004



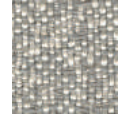
FB00005



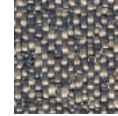
FB00006



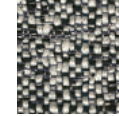
FB00007



FB00008



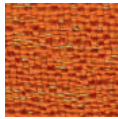
FB00009



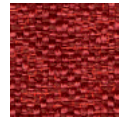
FB00010



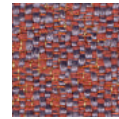
FB00011



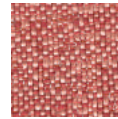
FB00012



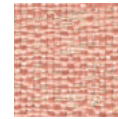
FB00013



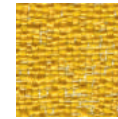
FB00014



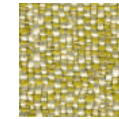
FB00015



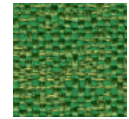
FB00016



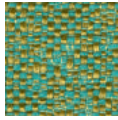
FB00017



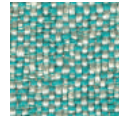
FB00018



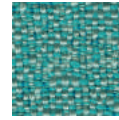
FB00019



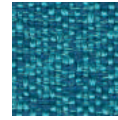
FB00020



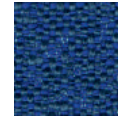
FB00021



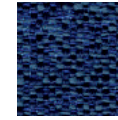
FB00022



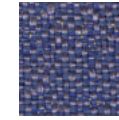
FB00023



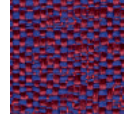
FB00024



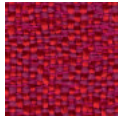
FB00025



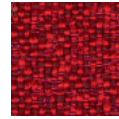
FB00026



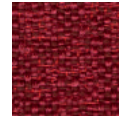
FB00027



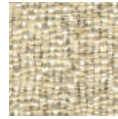
FB00028



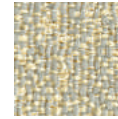
FB00029



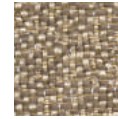
FB00030



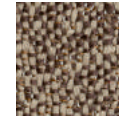
FB00031



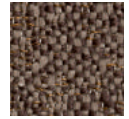
FB00032



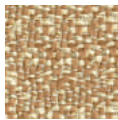
FB00033



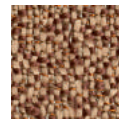
FB00034



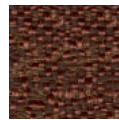
FB00035



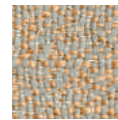
FB00036



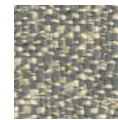
FB00037



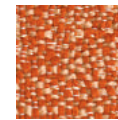
FB00038



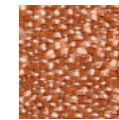
FB00039



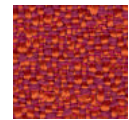
FB00040



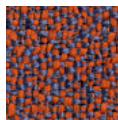
FB00041



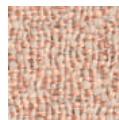
FB00042



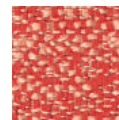
FB00043



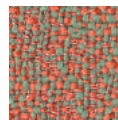
FB00044



FB00045



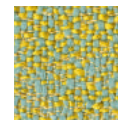
FB00046



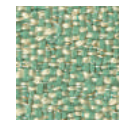
FB00047



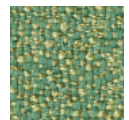
FB00048



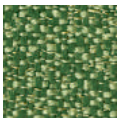
FB00049



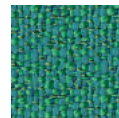
FB00050



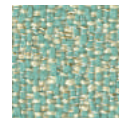
FB00051



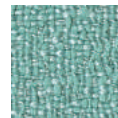
FB00052



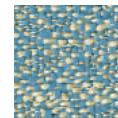
FB00053



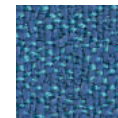
FB00054



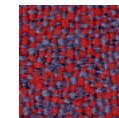
FB00055



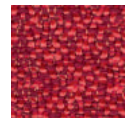
FB00056



FB00057



FB00058



FB00059



FB00060

sunbrella®
Heritage

Arper grade
CHAIRS: C
SOFAS: C



HE00001



HE00006



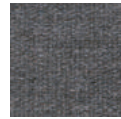
HE00009



HE00011



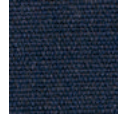
HE00012



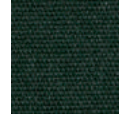
HE00015



HE00016



HE00017



HE00018



HE00021



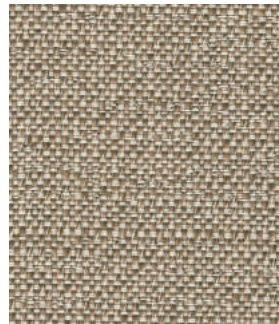
HE00022



HE00023

sunbrella®
Savane

Arper grade
CHAIRS: C
SOFAS: C



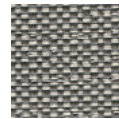
SV00233



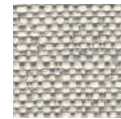
SV00234



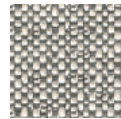
SV00235



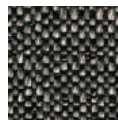
SV00236



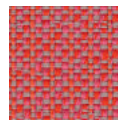
SV00349



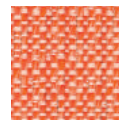
SV00350



SV00351



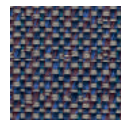
SV00352



SV00353



SV00354



SV00355



Istituito nel 1992, il marchio comunitario di qualità ecologica o Ecolabel, il cui logo è rappresentato da un fiore, è uno speciale sistema di certificazione creato per aiutare i consumatori europei a scegliere prodotti e servizi più ecologici e più rispettosi dell'ambiente.

Established in 1992, the EU Eco-label "Flower" is a unique certification scheme aimed to help European consumers distinguish greener, more environmentally friendly, products and services.

Hinter der "Blume", dem 1992 ins Leben gerufenen EU-Umweltzeichen, steckt ein einzigartiges Zertifizierungssystem, das dem europäischen Verbraucher das Erkennen umweltfreundlicherer Produkte und Dienstleistungen erleichtern soll.

Ètablished in 1992, le label écologique de l'EU symbolisé par la "Fleur" est un système d'homologation unique destiné à aider les consommateurs européens à discerner les produits et services plus verts et plus favorables à l'environnement.

Creada en 1992, la etiqueta ecológica de la UE, también conocida como "la flor", constituye un sistema de certificación único, cuyo objetivo es ayudar a los consumidores europeos a identificar los productos y servicios más ecológicos y respetuosos del medio ambiente.

Care instructions

Fabrics:

It is important that fabrics are cleaned regularly in order to keep them looking their best and extend their life. Powder and dirt can cause wear and tear on fabrics and as such we advise that you clean them using a low-pressure vacuum cleaner, preferably once a week.

Non-greasy stains can be removed by delicately dabbing them with a clean cloth that won't leave any lint or a sponge that has been soaked in clean, warm water then thoroughly squeezed out. If necessary, you can then soak with soapy water or water with liquid washing up detergent added (see formulas). Once this is done, soak the surface with clean, tepid water.

For greasy stains, use a dry stain remover. Ensure that you comply with the manufacturer's instructions as closely as possible. If you have any doubts, test the cleaning product on a discreet area in order to check its effect. Wait for at least 24 hours to see if any problems arise.

Formulas: The soapy solution consists of ¼ deciliter soap flakes per liter of hot water, which must then be cooled before use. The solution with dishwashing liquid is made up of max 1 teaspoon of detergent per every liter of water. If you use concentrated products, pour only a few drops into each liter of product.

Coated fabrics:

Regularly dust using a microfibre cloth. In the event of stains, clean using a cloth that has been dampened using tepid water or water with some neutral soap in it. Do not use abrasive products, ethyl alcohol and solvent-based detergents. If you have any doubts, test the cleaning product on a discreet area in order to check its effect. Wait for at least 24 hours to see if any problems arise.

Structural mesh in knitted fabric:

Made to Arper's technical specifications with post-consumption recycled polyester yarns, the knitted fabric mesh is soft and comfortable. The particular structure makes it self-draining and breathable, this ensures rapid passage of the water and makes it quick drying. It has excellent resistance to weathering, humidity and temperature changes, also thanks to the addition of anti-UV stabilisers that prevent and slow down natural ageing without the addition of substances dangerous to the environment or to health.

Maintenance: It is important to regularly clean the fabric in order to maintain its appearance in the best conditions and to extend its life. Dust and dirt wear out the fabric, so it is recommended to clean it with low suction vacuum cleaners, preferably once a week.

Non-grease stains are eliminated by gently dabbing them with a clean cloth that leaves no residue or a sponge immersed in clean hot water and then well squeezed. If necessary, wash by dipping the cloth used for cleaning in soapy water or water with the addition of liquid dishwashing detergent (see formulas). Then dab

the surface with clean warm water, letting it dry completely.

For grease stains, it is possible to use dry stain removers, scrupulously following the manufacturer's instructions.

Do not use hot steam, do not dry with electrical appliances with temperatures above 50°C. Do not use abrasive substances or chemical solvents.

In case of doubt, test the cleaning product on a part hidden from view to verify the result, waiting at least 24 hours for any problems to arise.

Formulas: The soapy solution consists of 1/4 dl of soap flakes for each litre of hot water, which then needs to be cooled before use. The solution with liquid dishwashing detergent consists of up to 1 teaspoon of detergent per litre of water. If you use concentrated products, pour only a few drops into each litre of product.

Leather, hard leather:

Take care not to place products in direct sunlight as this can alter the colour of these materials. Avoid exposing the materials to heat sources.

Regularly dust using a soft, dry cloth. Any stains need to be removed as quickly as possible to prevent them from soaking in deeply. Use absorbent paper or a cloth to absorb them straight away. For cleaning, use specific, high-quality leather cleaning products and comply with the manufacturer's instructions as closely as possible.

If you have any doubts, test the cleaning product on a discreet area in order to check its effect. Wait for at least 24 hours to see if any problems arise. Alternatively, use a cloth that has been dampened with some water and well-diluted neutral soap. Do not rub. Instead, delicately dab the stain working from the edge into the centre, then dry immediately after treatment.

Wood:

Dust and common domestic stains can be removed using a solution made from water and well-diluted neutral soap. Under no circumstances should you use commercial stain removers for cleaning. In order to avoid scratching the products, use a soft cloth and clean using circular movements. Do not use solvents or abrasive products. Always dry surfaces using a dry cloth. If you have any doubts, test the cleaning product on a discreet area in order to check its effect. Wait for at least 24 hours to see if any problems arise.

Wood for outdoor use:

Wood is a natural material suitable for outdoor use. For a sustainable approach, Arper selects only essences from Europe within an FSC certified chain of custody. The use of water-based paints, safe for health and the environment, guarantees a high level of protection and durability for outdoor use, with a reduced

Care instructions

Fabrics:

It is important that fabrics are cleaned regularly in order to keep them looking their best and extend their life. Powder and dirt can cause wear and tear on fabrics and as such we advise that you clean them using a low-pressure vacuum cleaner, preferably once a week.

Non-greasy stains can be removed by delicately dabbing them with a clean cloth that won't leave any lint or a sponge that has been soaked in clean, warm water then thoroughly squeezed out. If necessary, you can then soak with soapy water or water with liquid washing up detergent added (see formulas). Once this is done, soak the surface with clean, tepid water.

For greasy stains, use a dry stain remover. Ensure that you comply with the manufacturer's instructions as closely as possible. If you have any doubts, test the cleaning product on a discreet area in order to check its effect. Wait for at least 24 hours to see if any problems arise.

Formulas: The soapy solution consists of ¼ deciliter soap flakes per liter of hot water, which must then be cooled before use. The solution with dishwashing liquid is made up of max 1 teaspoon of detergent per every liter of water. If you use concentrated products, pour only a few drops into each liter of product.

Coated fabrics:

Regularly dust using a microfibre cloth. In the event of stains, clean using a cloth that has been dampened using tepid water or water with some neutral soap in it. Do not use abrasive products, ethyl alcohol and solvent-based detergents. If you have any doubts, test the cleaning product on a discreet area in order to check its effect. Wait for at least 24 hours to see if any problems arise.

Structural mesh in knitted fabric:

Made to Arper's technical specifications with post-consumption recycled polyester yarns, the knitted fabric mesh is soft and comfortable. The particular structure makes it self-draining and breathable, this ensures rapid passage of the water and makes it quick drying. It has excellent resistance to weathering, humidity and temperature changes, also thanks to the addition of anti-UV stabilisers that prevent and slow down natural ageing without the addition of substances dangerous to the environment or to health.

Maintenance: It is important to regularly clean the fabric in order to maintain its appearance in the best conditions and to extend its life. Dust and dirt wear out the fabric, so it is recommended to clean it with low suction vacuum cleaners, preferably once a week. Non-grease stains are eliminated by gently dabbing them with a clean cloth that leaves no residue or a sponge immersed in clean hot water and then well squeezed. If necessary, wash by dipping the cloth used for cleaning in soapy water or water with the addition of liquid dishwashing detergent (see formulas). Then dab the surface with clean warm water, letting it dry completely.

For grease stains, it is possible to use dry stain removers,

scrupulously following the manufacturer's instructions.

Do not use hot steam, do not dry with electrical appliances with temperatures above 50°C. Do not use abrasive substances or chemical solvents.

In case of doubt, test the cleaning product on a part hidden from view to verify the result, waiting at least 24 hours for any problems to arise.

Formulas: The soapy solution consists of 1/4 dl of soap flakes for each litre of hot water, which then needs to be cooled before use. The solution with liquid dishwashing detergent consists of up to 1 teaspoon of detergent per litre of water. If you use concentrated products, pour only a few drops into each litre of product.

Leather, hard leather:

Take care not to place products in direct sunlight as this can alter the colour of these materials. Avoid exposing the materials to heat sources.

Regularly dust using a soft, dry cloth. Any stains need to be removed as quickly as possible to prevent them from soaking in deeply. Use absorbent paper or a cloth to absorb them straight away. For cleaning, use specific, high-quality leather cleaning products and comply with the manufacturer's instructions as closely as possible.

If you have any doubts, test the cleaning product on a discreet area in order to check its effect. Wait for at least 24 hours to see if any problems arise. Alternatively, use a cloth that has been dampened with some water and well-diluted neutral soap. Do not rub. Instead, delicately dab the stain working from the edge into the centre, then dry immediately after treatment.

Wood:

Dust and common domestic stains can be removed using a solution made from water and well-diluted neutral soap. Under no circumstances should you use commercial stain removers for cleaning. In order to avoid scratching the products, use a soft cloth and clean using circular movements. Do not use solvents or abrasive products. Always dry surfaces using a dry cloth. If you have any doubts, test the cleaning product on a discreet area in order to check its effect. Wait for at least 24 hours to see if any problems arise.

Wood for outdoor use:

Wood is a natural material suitable for outdoor use. For a sustainable approach, Arper selects only essences from Europe within an FSC certified chain of custody. The use of water-based paints, safe for health and the environment, guarantees a high level of protection and durability for outdoor use, with a reduced environmental impact.

Care instructions

Maintenance: Dust and the most common stains can be removed using a well-diluted solution of water and neutral soap. It is absolutely necessary not to use commercial stain removers for cleaning. To avoid scratching, use a soft cloth and clean with gentle, circular movements (especially the opaque finishes, if subjected to action that is too aggressive, may develop shiny halos in spots). Do not use waxes for furniture or floors, solvents or abrasive products. Always dry the surfaces with a dry cloth. Do not use the pressure washer or high-pressure water, which may damage the surface of the wood. In case of doubt, test the cleaning solution on a part hidden from view to verify the result, waiting at least 24 hours for any problems to arise. Immediately remove any liquids spilled on the surface of the wood, avoid the accumulation of water or other liquids that could damage the product.

Wood can have impurities and imperfections, which fall within accepted quality standards, and should be considered as distinctive features that attest to its natural beauty. Periodic and correct maintenance extends the life of the product.

Plastic Materials:

Regularly plastic surfaces dust using a microfibre cloth. Dust and common domestic stains can be removed using a cloth or sponge that has been dampened in tepid water or water with some well-diluted neutral detergent in it.

Do not use commercial stain removers or aggressive products for cleaning. In order to avoid scratching the products, use a soft cloth and clean using circular movements. Under no circumstances should you use solvent-based detergents or abrasive products. If you have any doubts, test the cleaning product on a discreet area in order to check its effect. Wait for at least 24 hours to see if any problems arise.

Chrome-plated, anodised or painted metal surfaces:

Clean using specific products such as regular detergents for domestic surfaces diluted in tepid water, provided they are not abrasive and do not contain acid or bleach. Avoid using sponges and scourers made from synthetic fibre or metal as these could permanently mark surfaces. After cleaning, rinse products carefully to prevent traces of detergent from reacting with the surface finish to avoid dulling or oxidisation. After cleaning, dry with a shammy cloth. The use of polish on chrome-plated or painted surfaces is not recommended. These products should always be used with caution and only by experts as their abrasive qualities could irreparably damage surfaces. If you have any doubts, test the cleaning product on a discreet area in order to check its effect. Wait for at least 24 hours to see if any problems arise.

Stainless steel:

Clean on a regular basis (every 15-20 days) using a soft damp cloth or common products specific for stainless steel.

Table Tops:

Clean and remove any substance that accidentally comes into contact with the surface as quickly as possible using a damp cloth or microfibre cloth and some neutral detergent diluted in tepid water. Always dry after cleaning. Aggressive detergents containing bleach or abrasive detergents (such as bathroom cream cleaner) must never be used. Take care not to rub too hard in order to avoid scratching the surface. Avoid using sponges or scourers made from synthetic fibres or metal.

If you have any doubts, test the cleaning product on a discreet area in order to check its effect. Wait for at least 24 hours to see if any problems arise.

Glass surfaces

The tempered glass used by Arper ensures high levels of safety. In the event of a breakage, the glass smashes into tiny, rounded fragments which will not cause a cut. In any case, you should avoid hitting the glass with hard or sharp objects and the glass should not be exposed to extreme shifts in temperature (i.e. do not place very hot or cold items on it).

Regularly dust glass using a microfibre cloth. Clean using specific products or neutral soap applied using a soft, clean cloth. Do not use powered detergents or abrasive detergents that could scratch the glass, causing irrevocable damage to the surface. If you have any doubts, test the cleaning product on a discreet area in order to check its effect. Wait for at least 24 hours to see if any problems arise.

Marble and Venetian Terrazzo surfaces:

Clean and remove any substance that accidentally comes into contact with the surface as quickly as possible using a damp cloth or microfibre cloth and some tepid water or a specialist detergent. Always dry immediately after cleaning. Take care not to rub too hard in order to avoid scratching the marble. If you have any doubts, test the cleaning product on a discreet area in order to check its effect. Wait for at least 24 hours to see if any problems arise.

Marble is a calcareous, porous material that is susceptible to reactions with acidic substances. Marble can absorb fatty or oily substances and colourants. These can soak into the material and stain the surface. During use, you are advised against using objects that can scratch or cause abrasions to the surface, such as acidic products (Coca Cola, vinegar, acidic detergents) and colourants (wine, coffee, fruit, sugary liquid, tomato sauce, very hard water etc.).

Indications for use & maintenance of “outdoor” products:

Arper guarantees, through laboratory tests, the strength and durability of its products. It should be noted, however, that any material exposed to atmospheric agents and the elements, even if treated specifically for outdoor use, will undergo a gradual deterioration over time, the extent of which is closely related to the geographical position, the evolution of climatic phenomena, the more or less marked presence of humidity, salinity (poolside, marine environments).

Use and maintenance are conditions that determine the actual yield and maintenance in good condition of the product over time. It is therefore recommended to avoid critical external conditions such as prolonged and direct exposure to sunlight, pouring rain and aggressive environments such as proximity to the seaside or where the sea breeze can bring high levels of moisture with marine salinity or abrasive sands. Do not place wooden products on lawns or uneven surfaces, where any stagnation of water may damage the parts in contact. In any case, never let water or other liquids stagnate on the product. In the vicinity of plants or trees, remove any leaves, flowers or organic substances that could rest on the surfaces of the product, to prevent that their deterioration stains the paints or fabrics. In case of exposure to rain, as soon as possible, remove the pillows (if any) from the chair and let them dry separately to facilitate drying and drainage of the water.

Periodic cleaning is recommended, following the recommended indications for the different materials. For short periods when the product is not in use, it is recommended to cover it with the protective cover. In case of prolonged non-use or during the winter period, it is recommended to clean the product, allow it to dry well, and store it in a well-aerated indoor place, protected from the elements. The pillows (if any) must be removed from the chair, cleaned and left to dry well, and finally, stored in a well-aerated indoor place, protected from the elements.

I colori visualizzati sono puramente indicativi e possono variare rispetto alla realtà. Rivolgersi ad Arper o al proprio rivenditore di fiducia per ricevere un campione colore o per maggiori informazioni.

Arper SPA si riserva di apportare modifiche e/o migliorie di carattere tecnico ed estetico ai propri modelli e prodotti in qualsiasi momento e senza preavviso.

Per maggiori informazioni visitate il sito arper.com

Colours shown are used for reference only and may look different in reality. Please contact Arper or your retailer to receive a colour sample or more information.

Arper SPA reserves the right to make modifications and improvements of a technical or aesthetic nature to the products at any time without notice.

For further information, please visit arper.com

Bei den angezeigten Farben handelt es sich um reine Farbbeispiele, die von der Realität abweichen können.

Für Farbmuster und nähere Informationen wenden Sie sich bitte an Arper oder an den Händler Ihres Vertrauens.

Arper SPA behält sich das Recht vor, jederzeit und ohne Vorankündigung Veränderungen und Verbesserungen technischen und ästhetischen Charakters an seinen Produkten vorzunehmen.

Für weitere Informationen besuchen Sie bitte unsere Webseite arper.com

La reproduction photographique des couleurs n'est que purement indicative et peut être différente de la réalité. S'adresser à Arper ou à votre revendeur de confiance pour recevoir un échantillon de couleur ou pour de plus amples informations.

Arper SPA se réserve le droit d'apporter des modifications et/ou des améliorations d'ordre technique et esthétique à ses produits, et ceci à tout moment et sans préavis.

Pour plus d'informations, rendez-vous sur le site arper.com

Los colores visualizados son meramente indicativos y pueden diferir de la realidad. Para recibir una muestra del color o para más información, contactar a Arper o a su distribuidor de zona.

Arper SPA se reserva el derecho de realizar cambios y/o mejoras técnicas y estéticas en sus productos en cualquier momento y sin previo aviso.

Para más información, visite arper.com"

Italy

Monastier (TV) — Headquarters
and showroom
Arper SPA
Via Lombardia 16
31050 Monastier di Treviso (TV)
T +39 0422 7918
info@arper.com
www.arper.com

Commerciale Italia
T +39 0422 791905
commerciale@arper.com

Export Office
sales@arper.com

Milan — Showroom
Via Pantano 30
20122 Milan
T +39 02 89093865
milano@arper.com

EUROPE

UK

London — Subsidiary and showroom
Arper UK LTD
11 Clerkenwell Road
London EC1M 5PA
T +44 (0) 20 7253 0009
london@arper.com

Germany

Cologne — Showroom
Design Post Köln
Deutz-Mülheimer-Str. 22a
50679 Köln
T +49 221 690 650
info@designpost.de

Fruchtof München — Meeting Hub
2. Innenhof, 2. Etage
Gotzinger Straße 52b
D-81371 München
T +49 171 1080976
muenchen@arper.com

Norway

Oslo — Showroom
Drammensveien 130
0277 Oslo
T +47 908 202226
norway@arper.com

Sweden

Stockholm — Branch
T +46 705 101216
sweden@arper.com

The Netherlands

Amsterdam — Showroom
Design Post
Cruquiusweg 111-L
1019 AG Amsterdam
T +31 (0)20 705 1555
holland@arper.com

AMERICA

USA

New York — Subsidiary and showroom
Arper USA Inc.
476 Broadway, Suite 2F
NY 10013 New York
T +1 (212) 647 8900
infousa@arper.com

Chicago — Showroom
The Merchandise Mart
Space#346 - 3rd Floor
Chicago
T +1 (336) 434 2366
infousa@arper.com

High Point, North Carolina — Production
and logistics site
660 Southwest St
High Point, NC 27260
T +1 (336) 434 2370
infousa@arper.com

Los Angeles — Showroom
550 South Hope St., Suite 275
90071 Los Angeles
T +1 (336) 434 2382
infousa@arper.com

Mexico

Mexico City — Subsidiary and showroom
Culiacan 123, Piso 9
Col. Hipodromo Condesa
Delegation Cuauhtémoc
06170 – Ciudad de México
Mexico
T +52 1 62714417
infolatam@arper.com

ASIA

Japan

Arper Japan K.K. — Subsidiary
and showroom
HT Jingu Gaien Bldg.8F
Minato-ku Kita-Aoyama 2-7-22
Tokyo 107-0061
T +81 3 5775 0008
carejpn@arper.com

China

Shanghai — Subsidiary
爱尔派 (上海) 家具设计有限公司
2nd Floor, Unit N204-207,
Building N1,
The Bund Finance Center,
558 Zhongshan NO.2 Road(E),
Shanghai
T +86 021 5466 7366
china@arper.com

Singapore

Singapore — Branch
c/o 3 Lim Teck Kim Road, #01-01
Genting Centre
088934 Singapore
singapore@arper.com

UAE

Arper Middle East and India
— Subsidiary
and showroom
U-Bora Towers - Unit 1901
Business Bay
Dubai
T +971 529255633
infofme@arper.com