

Aava 02

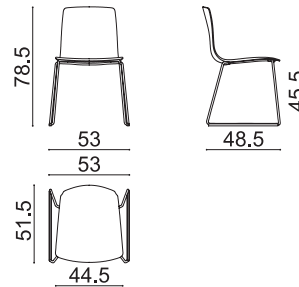
Design by Antti Kotilainen, 2023

Art. 7619

Chair on a sled base in chromed or powder-coated steel. Shell in polypropylene made with post-consumer recycled materials, mixed with virgin material, with upholstery in fabric, leather, coated fabric or customer's own material. The upholstery can be separated and replaced by technical personnel, since it has been applied without the use of glue. Glides are also available, with felt insert for wood floors.



Dimensions *



* File CAD 2D - 3D available for download at www.arper.com

Frame Base



Shell

Stackability:

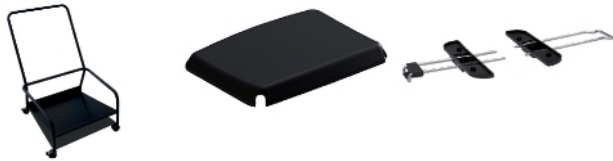
(should the weight exceed 25 kilos a handling tool must be used).

- with stacking pad, without tools up to 6 units
- with stacking pad, with trolley up to 6 units
- with link: with stacking pad, without tools up to 6 units
- with link: with stacking pad, with trolley up to 6 units

Aava 02

Design by Antti Kotilainen, 2023

ACCESSORIES



Single trolley Art.
0500


Stacking protection
pad Art. 3950

Link Art. 3970

SHIPMENT DETAILS

Art.7619

1 pz = 2  - kg 10,06/ m³ 0,265

4 pz = 2  - kg 29,68/ m³ 0,363

TECHNICAL SPECIFICATIONS

Art.7619

COL requirement m² 2.34

H 140 cm. COM Meterage m 0.935

FIRE RETARDANT TEST

ENVIRONMENTAL CERTIFICATIONS



arper

Aava 02

Design by Antti Kotilainen, 2023

GLIDES

OPTIONAL



Wood